

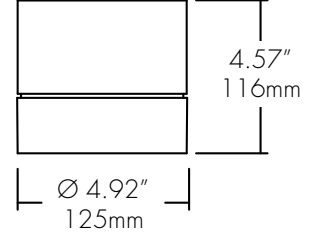
LETO 11.5

SURFACE MOUNT WET LED CYLINDER
TUNABLE WHITE/WARM DIM



Features

- Faceted and Smooth metal reflectors provide beam spreads between 10° to 80°.
- Nine drivers selections available to cover wide range of applications.
- Three output options available up to 2000 lumens.
- 5 year warranty.



Finish Options

- White
- Mocha
- Black
- Charcoal
- Silver
- Cerulean
- Firebrick



Technical Information

TYPE	WD1830			TW2765
	OUTPUT OPTIONS	700 lm	1000lm	1500lm
Fixture wattage	7.9 W	11.3 W	16.3 W	19.8 W
Delivered Lumen at full on	714 lm	903 lm	1534 lm	1397 lm
Efficacy	90 lm/W	80 lm/W	94 lm/W	71 lm/W
Center Beam Candlepower (10° Faceted Reflector)	5958 cd	7535 cd	12800 cd	11657 cd

CCT	CRI	TM-30		
		R _f	R _g	R ₉
1800K	94	90	93	61
3000K	94	89	97	72
2700K	91	90	96	59
6500K	93	87	97	73

Integral Driver Example: Fixture LET115W-SM-07-WD1830-F10-CL-WH-WH-PHSD-NA

Remote Driver Example: Fixture LET115W-SM-07-WD1830-F10-CL-WH-WH-010L-NA
HRM-LET115W-SM-07-WD1830-010L-NA

Ordering Code

Fixture

MODEL	TYPE	OUTPUT	CCT	OPTIC	ACCESSORY	BODY FINISH	BAFFLE FINISH
LET115W - Leto 11.5 Wet	SM - Surface Mount	07 - 700 lumens ¹ 10 - 1000 lumens 15 - 1500 lumens	WD1830 - Warm Dim, 1800K-3000K TW2765 - Tunable White, 2700K-6500K ⁶	F10 - 10 Degree, Faceted F18 - 18 Degree, Faceted F30 - 30 Degree, Faceted F45 - 45 Degree, Faceted F60 - 60 Degree, Faceted S30 - 30 Degree, Smooth S45 - 45 Degree, Smooth S80 - 80 Degree, Smooth	CL - Clear Lens DL - Diffusing Lens	Standard WH - White BK - Black SL - Silver Premium² MA - Mocha CC - Charcoal CR - Cerulean FB - Firebrick	Standard WH - White BK - Black SL - Silver Premium² MA - Mocha CC - Charcoal CR - Cerulean FB - Firebrick
DRIVER³			DRIVER OPTIONS⁵				

PHSD - Forward/Reverse Phase, 1% Dimming, 120V Only
010S - 0-10V, 1% Dimming, 120/277V
0103 - 0-10V, 1% Dimming, 347V Only
010L - EdoLED, 0-10V, Linear, 0.1% Dimming, 120/277V
010G - EdoLED, 0-10V, Log, 0.1% Dimming, 120/277V
DALI - EdoLED, DALI Protocol 2, DT-6, 0.1% Dimming, 120/277V
DALI8 - EdoLED, DALI Protocol 2, DT-8, 0.1% Dimming, 120/277V
LUTE - Lutron HiLume Ecodigital, 1% Dimming, 120V/277V
DMX - EdoLED, DMX, 0.1% Dimming, 120V/277V

NA - None
EMG - Emergency Driver⁴

1 - 700 lumens is not available with LUTE driver.
2 - Premium finishes may have extended lead times. Custom RALs are available, please consult Inside Sales with specific request.
3 - All drivers remote except PHSD/010S driver options.
4 - Emergency option comes prewired from factory with driver in remote housing. 8W of continuous power provided for a minimum of 90 minutes. Must be installed within 30 feet of luminaire using 18 AWG wire. Not available with 0103, DMX, DALI8 or LUTE Driver.
5 - AWNR/CSMB available upon request, contact Senso for details.
6 - TW2765 only available with 15 lumens and 010L/010G/DALI8/DMX. Always remote mounted. Cannot use with EMG.

CONTACT FACTORY FOR MORE OPTIONS.

LETO 11.5

SURFACE MOUNT WET LED CYLINDER
TUNABLE WHITE/WARM DIM

Lens & Accessory Options

OPTC-ACC-CL-94MM

Clear Lens

Also available with complete fixture, use ordering code.

-CL



Light Loss Factor: 100%*

OPTC-ACC-DL-94MM

Diffusing Lens

Also available with complete fixture, use ordering code.

-DL



Light Loss Factor: 87%*

*Light Loss Factor calculated with 60° faceted reflector.

Optics

RFLC-FXX-94MM

Faceted Reflector

Also available with complete fixture, use ordering code.

-F10/-F18/-F30/-F45/-F60



RFLC-SXX-94MM

Smooth Reflector

Also available with complete fixture, use ordering code.

-S30/-S45/-S60



FXX	Optic
F10	10° Faceted
F18	18° Faceted
F30	30° Faceted
F45	45° Faceted
F60	60° Faceted
S30	30° Smooth
S45	45° Smooth
S60	60° Smooth

LETO 11.5

SURFACE MOUNT WET LED CYLINDER
TUNABLE WHITE/WARM DIM

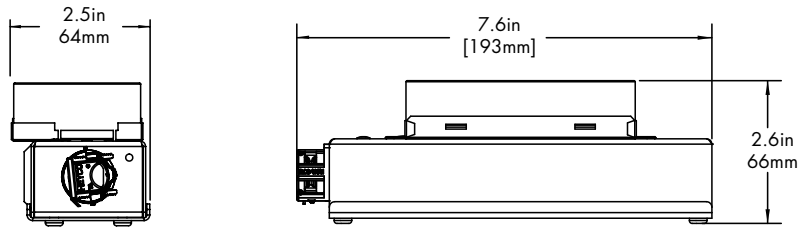
Remote Driver Housing

Depending on the options selected in the order code on page 1, a Remote Driver Housing may be required. This will automatically be generated and put on your order as necessary.

REMOTE DRIVER	MODEL	OUTPUT	CCT	DRIVER	DRIVER OPTIONS
HRM-Housing, Remote	LET115W-SM-Leto 11.5 Wet Surface Mount	Same as Fixture	Same as Fixture	Same as Fixture	Same as Fixture

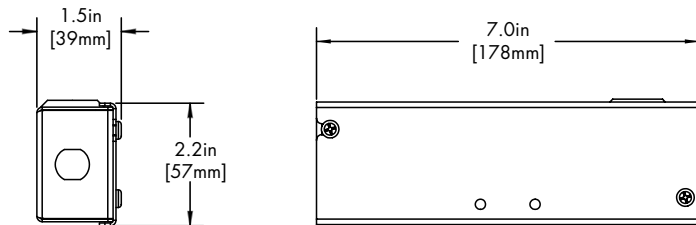
Maximum mounting distance to luminaire using 18 AWG wire						
010S	PHSD	010L	010G	DALI DALI8	DMX	LUTE
16'	16'	72'	72'	72'	149'	15'

HRM Single with Externally Mounted Driver



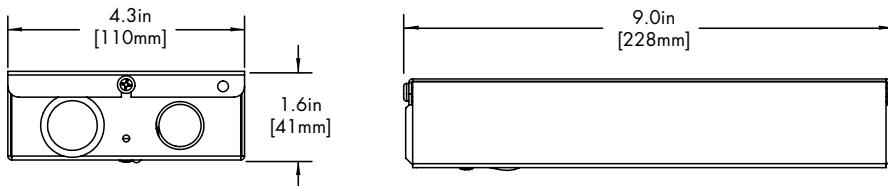
Driver
010L or 010G
010S
010L or 010G or 010S
DALI or LUTE

HRM Single



Driver
PHSD

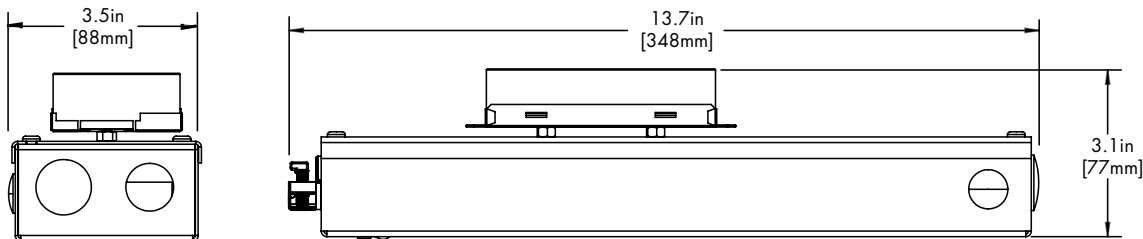
HRM Double



Driver
DALI8
DMX

EMG Emergency Driver

120 minute EMG operation time.



Driver
EMG

LETO 11.5

SURFACE MOUNT WET LED CYLINDER
TUNABLE WHITE/WARM DIM

Standard Finishes

BK
Black



WH
White



SL
Silver



Premium Finishes

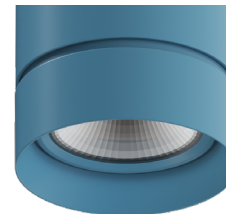
MA
Mocha



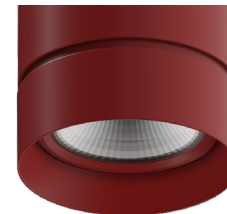
CC
Charcoal



CR
Cerulean

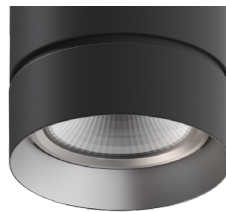
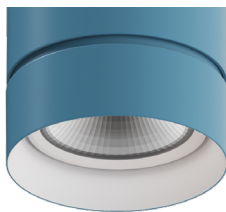
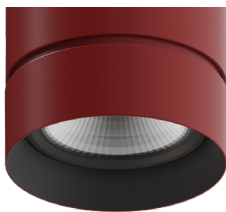


FB
Firebrick



Two Tone Finishes

Inside finish refers to Baffle Finish selection from page 1. Any combination may be used for baffle and body finishes.



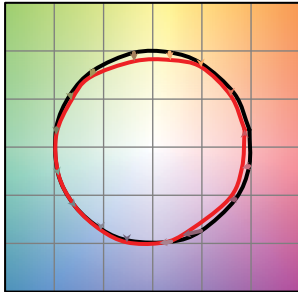
LETO 11.5

SURFACE MOUNT WET LED CYLINDER
TUNABLE WHITE/WARM DIM

TM-30

Warm Dim 1800K

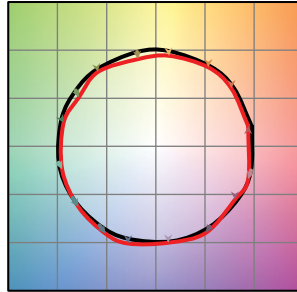
COLOR VECTOR GRAPHIC



— Reference Source — Test Source

Warm Dim 3000K

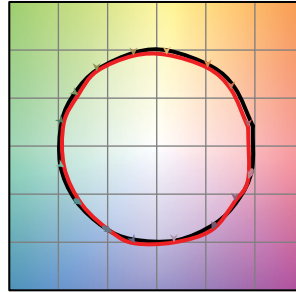
COLOR VECTOR GRAPHIC



— Reference Source — Test Source

Tunable White 2700K

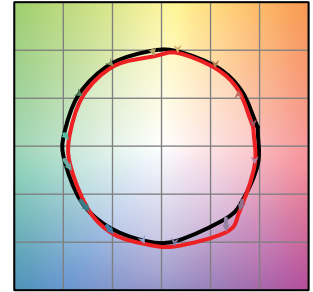
COLOR VECTOR GRAPHIC



— Reference Source — Test Source

Tunable White 6500K

COLOR VECTOR GRAPHIC



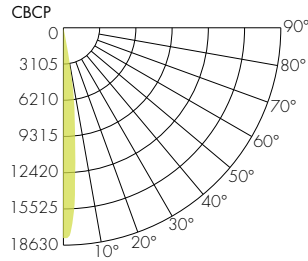
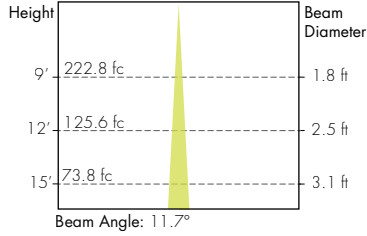
— Reference Source — Test Source

LETO 11.5

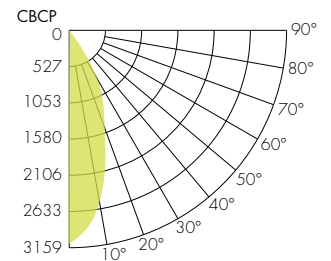
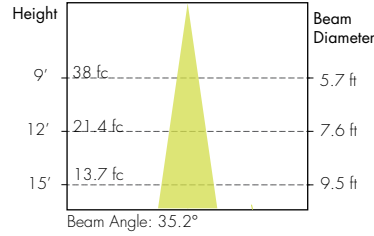
SURFACE MOUNT WET LED CYLINDER
TUNABLE WHITE/WARM DIM

Photometry

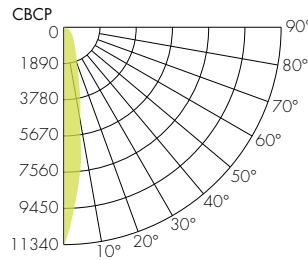
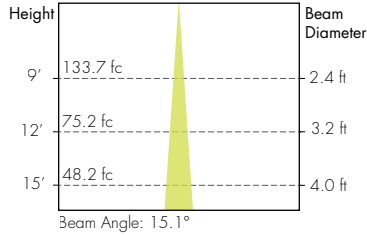
10° Faceted Reflector



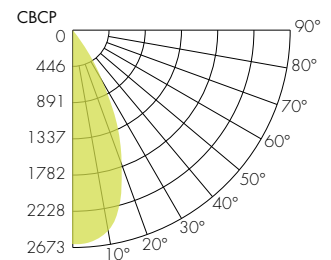
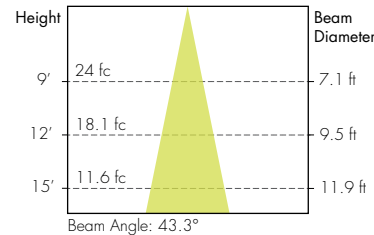
30° Smooth Reflector



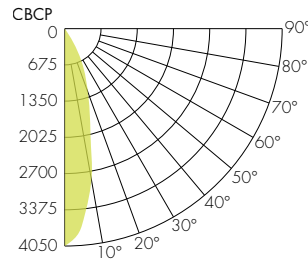
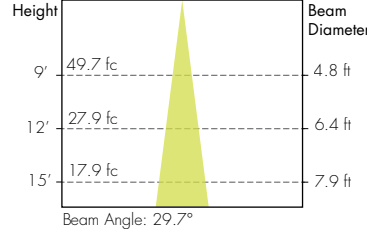
18° Faceted Reflector



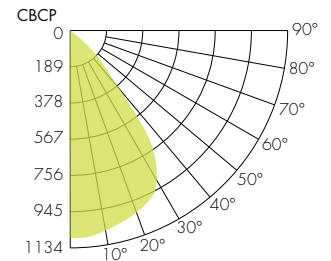
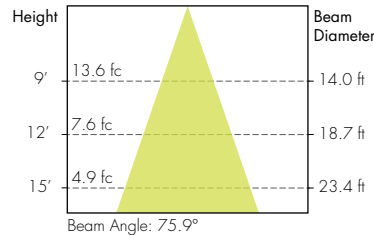
45° Smooth Reflector



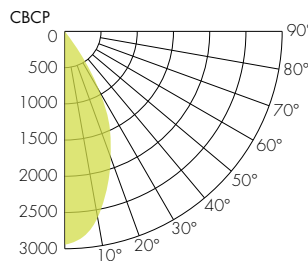
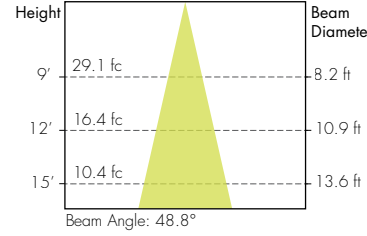
30° Faceted Reflector



80° Smooth Reflector



45° Faceted Reflector



60° Faceted Reflector

