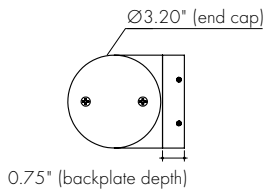


Features

- Cylindrical shape with 360° of diffuse, even illumination.
- 24VDC Class 2 fixtures made to order up to 48”.
- Suitable for wall mount applications
- Class 2 listed for damp locations
- Dot free even illumination
- Integral power supply included, fits inside a single gang box behind the backplate. 120 VAC only, dimmable with MLV, ELV, and Incandescent dimmers (see dimmer compatibility chart)
- High Color Quality options offer premium quality and vibrant colors with R9 values up to 97
- High Efficacy options offer best in class output and efficacy with over 980 lm/ft and up to 94 lm/W
- Proprietary strong bond solder method handles up to 50 lbs of pull force on wire leads and connectors
- 5 Year warranty



Finish Options (see page 2 for additional information)

- | | | |
|--|--------------------------------------|--|
| <input type="checkbox"/> Silver Anodized | <input type="checkbox"/> White | <input type="checkbox"/> Aged Brass |
| <input type="checkbox"/> Black | <input type="checkbox"/> Matte Black | <input type="checkbox"/> Polished Gold |
| <input type="checkbox"/> Bronze | <input type="checkbox"/> Warm Nickel | <input type="checkbox"/> Chrome |



Technical Information

TYPE	High Color Quality		High Efficacy		
	72SO	72HO	HE48LO	HE48SO	HE48MO
OUTPUT OPTIONS					
Lumens Output (3000K) <small>(with a Frosted Lens)</small>	548 lm/ft	891 lm/ft	534 lm/ft	740 lm/ft	988 lm/ft
Average Power Consumption <small>(for a 4' section)</small>	8.4 W/ft	14.4 W/ft	5.7 W/ft	8.4 W/ft	10.5 W/ft
Efficacy	65 lm/W	62 lm/W	94 lm/W	88 lm/W	94 lm/W
Max Run Length <small>(in series)</small>	13 ft	11 ft	16 ft	14 ft	11 ft
Max Ambient Temperature*	45°C [118°F]	25°C [77°F]	50°C [122°F]	45°C [113°F]	40°C [104°F]

*Max Ambient Temperature to maintain L70 of 50k+ hours. Exceeding Max Ambient Temperature may result in decreased life/output. Consult Technical Support for specific inquiries.

High Color Quality (72)

CCT	Multiplier <small>(reference - 3000K)</small>	CRI	TM-30		
			R _f	R _g	R ₉
1900K	0.55	96	94	97	90
2200K	0.70	96	95	101	89
2400K	0.72	98	97	101	91
2700K	0.74	97	96	101	91
3000K	1.00	97	95	104	97
3500K	1.02	97	94	105	97
4100K	1.07	97	90	99	97

High Efficacy (HE48/HE64)

CCT	Multiplier <small>(reference - 3000K)</small>	CRI	TM-30		
			R _f	R _g	R ₉
2200K	0.73	92	91	97	42
2500K	0.81	93	96	96	62
2700K	0.94	92	90	99	58
3000K	1.00	92	89	99	57
3500K	1.02	92	89	99	60
4000K	1.02	92	86	94	71

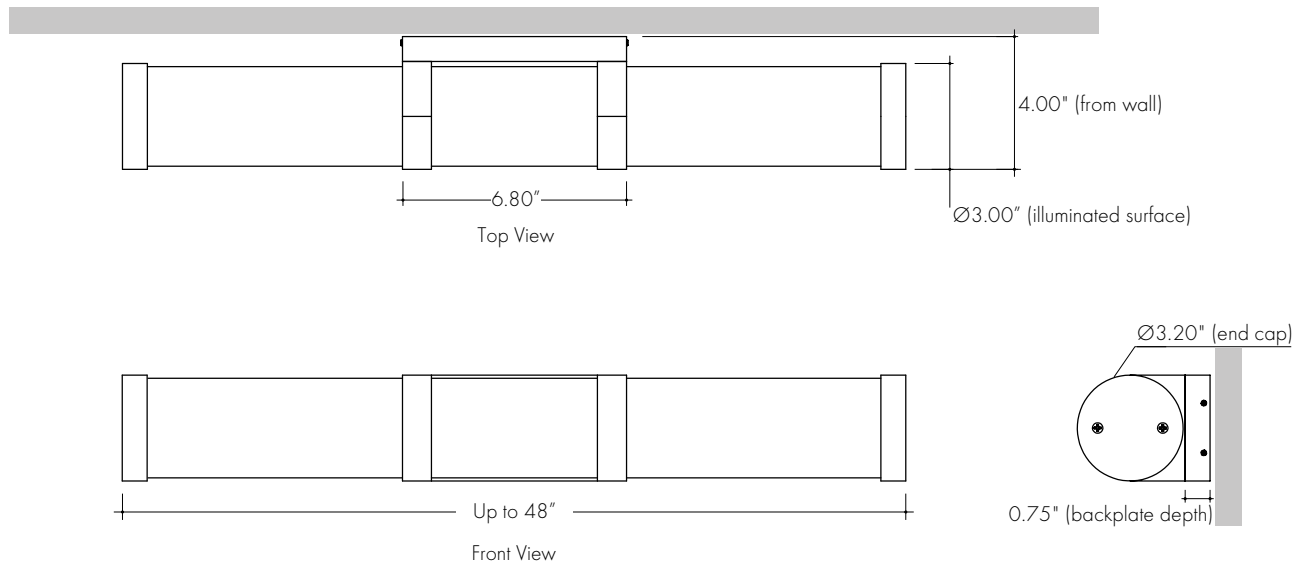
Ordering Code

MODEL	LENGTH ¹	OUTPUT	CCT	LENS ²	FINISH ³
EXPV-Explorer Vanity	12" - 48" 1" increments	72SO-Standard 72HO-High	19K-1900K 22K-2200K 24K-2400K 27K-2700K 30K-3000K 35K-3500K 41K-4100K	F-Frosted	SA-Silver Anodized BK-Black BZ-Bronze WH-White MBK-Matte Black WN-Warm Nickel LB-Light Brass PG-Polished Gold CH-Chrome
	12" - 48" 2" increments	HE48LO-Low HE48SO-Standard HE48MO-Medium	22K-2200K 25K-2500K 27K-2700K 30K-3000K 35K-3500K 40K-4000K		

1 - Custom lengths and increments are available, please consult Inside Sales with specific request.
2 - All High Efficacy options can be used to comply with Title 24 JAS8. High Color Quality options can be used to comply with Title 24 JAS8 depending on Output, CCT, and lens selections, see multiplier charts to calculate specific efficacies.

3 - Non SA finishes may have extended lead times. Custom RALs are available, please consult Inside Sales with specific request.

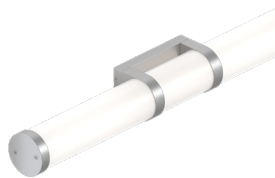
Product Dimensions



Finish Options

- Finish options are available in a wide variety, allowing for complete customization of style and aesthetic.
- Non Silver Anodized finishes may have extended lead times.
- Polished Gold finishes have a maximum fixture length of 48", and Chrome finishes have a maximum fixture length of 72".
- Custom RALs are available, please consult Inside Sales with specific request.

Silver Anodized



Silver Anodized is a soft silver with a clear finish.

Black



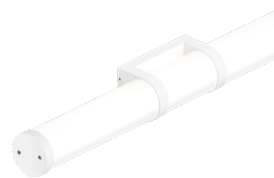
Black is a true deep black with a glossy finish.

Bronze



Bronze is a rich, dark brown with a satin finish.

White



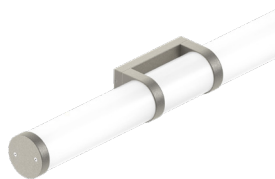
White is a polar bright white and field paintable.

Matte Black



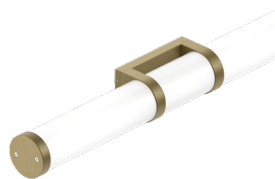
Matte Black is a dark, pitch-black with a soft flat finish.

Warm Nickel



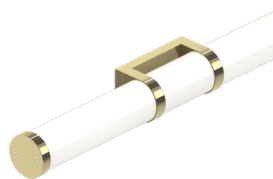
Warm Nickel is a soft, silvery smoke with warm tones and a satin finish.

Aged Brass



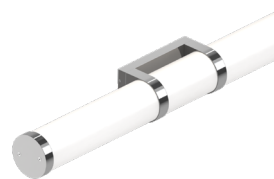
Aged Brass is a deep brown shade with slightly golden undertones.

Polished Gold



Polished Gold is bright and radiant for a brilliant finish.


Chrome



Chrome is a highly reflective silver polish.

Light Transmission and Dotting

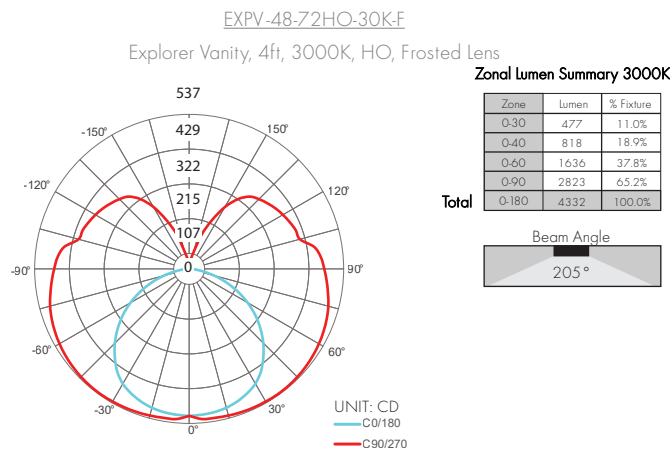
Output Options	Lens/Accessory	
	Frosted	
72SO	ND	
72HO	ND	
HE48LO	ND	
HE48SO	ND	
HE48MO	ND	
Transmission Percentage	100%	



CD **SD** **ND**

CD - Clear Dotting
SD - Slight Dotting
ND - No Dotting

Photometry



Power Consumption

Tested at Full Power.

Standard Nominal Lengths offered provide minimal shadowing. For alternate lengths, please consult Inside Sales with specific request.

High Color Quality (72)

Nominal Length (in)	Actual Length	Watts		Nominal Length (in)	Actual Length	Watts	
		SO	HO			SO	HO
12	11 4/16	7.1	12.0	47	47 3/16	30.3	-
13	12 7/16	8.0	13.4	48	-	-	-
14	13 9/16	8.7	14.5	49	-	-	-
15	14 12/16	9.6	16.0	50	-	-	-
16	15 14/16	10.2	17.1	51	-	-	-
17	-	-	-	52	-	-	-
18	17 1/16	11.1	18.6	53	-	-	-
19	18 3/16	11.9	19.7	54	-	-	-
20	19 6/16	12.8	21.3	55	-	-	-
21	20 8/16	13.6	22.4	56	-	-	-
22	21 11/16	14.5	23.8	57	-	-	-
23	22 13/16	15.1	24.7	58	-	-	-
24	-	-	-	59	-	-	-
25	24	15.8	25.7	60	-	-	-
26	25 3/16	16.6	26.9	61	-	-	-
27	26 5/16	17.3	27.9	62	-	-	-
28	27 8/16	18.1	29.2	63	-	-	-
29	28 10/16	18.7	30.1	64	-	-	-
30	29 13/16	19.6	31.5	65	-	-	-
31	30 15/16	20.4	32.5	66	-	-	-
32	-	-	-	67	-	-	-
33	32 2/16	21.3	33.9	68	-	-	-
34	33 4/16	22.0	34.9	69	-	-	-
35	34 7/16	22.7	36.2	70	-	-	-
36	35 9/16	23.3	37.1	71	-	-	-
37	36 12/16	24.1	38.4	72	-	-	-
38	37 14/16	24.8	39.3	73	-	-	-
39	-	-	-	74	-	-	-
40	39 1/16	25.6	-	75	-	-	-
41	40 3/16	26.3	-	76	-	-	-
42	41 6/16	27.1	-	77	-	-	-
43	42 8/16	27.7	-	78	-	-	-
44	43 11/16	28.5	-	79	-	-	-
45	44 14/16	29.1	-	80	-	-	-
46	46	-	-	81	-	-	-

Power Consumption

Tested at Full Power.

Standard Nominal Lengths offered provide minimal shadowing. For alternate lengths, please consult Inside Sales with specific request.

High Efficacy (HE48)

Nominal Length (in)	Actual Length	Watts			Nominal Length (in)	Actual Length	Watts		
		LO	SO	MO			LO	SO	MO
12	11 13/16	5.4	7.7	9.6	47	-	-	-	-
13	-	-	-	-	48	47 4/16	20.0	33.3	41.1
14	13 13/16	6.2	9.2	11.4	49	-	-	-	-
15	-	-	-	-	50	-	-	-	-
16	15 12/16	6.9	10.7	13.3	51	-	-	-	-
17	-	-	-	-	52	-	-	-	-
18	17 12/16	7.7	12.3	15.1	53	-	-	-	-
19	-	-	-	-	54	-	-	-	-
20	19 11/16	8.7	14.0	17.0	55	-	-	-	-
21	-	-	-	-	56	-	-	-	-
22	21 11/16	9.7	15.6	18.7	57	-	-	-	-
23	-	-	-	-	58	-	-	-	-
24	23 10/16	10.7	17.0	20.3	59	-	-	-	-
25	-	-	-	-	60	-	-	-	-
26	25 10/16	11.6	18.4	22.0	61	-	-	-	-
27	-	-	-	-	62	-	-	-	-
28	27 9/16	12.5	19.9	23.9	63	-	-	-	-
29	-	-	-	-	64	-	-	-	-
30	29 9/16	13.4	21.3	25.7	65	-	-	-	-
31	-	-	-	-	66	-	-	-	-
32	31 8/16	14.3	22.6	27.5	67	-	-	-	-
33	-	-	-	-	68	-	-	-	-
34	33 8/16	15.0	23.7	29.0	69	-	-	-	-
35	-	-	-	-	70	-	-	-	-
36	35 7/16	15.8	25.0	30.7	71	-	-	-	-
37	-	-	-	-	72	-	-	-	-
38	37 7/16	16.7	26.4	32.5	73	-	-	-	-
39	-	-	-	-	74	-	-	-	-
40	39 6/16	17.5	27.7	34.3	75	-	-	-	-
41	-	-	-	-	76	-	-	-	-
42	41 6/16	18.3	29.0	36.0	77	-	-	-	-
43	-	-	-	-	78	-	-	-	-
44	43 5/16	18.8	30.4	37.7	79	-	-	-	-
45	-	-	-	-	80	-	-	-	-
46	45 5/16	19.3	31.8	39.4	81	-	-	-	-

Voltage Drop Calculator

The below chart assumes nominal voltage of 24 Volts and a Voltage Drop Allowance of 3% through the wire

Wattage [W]	Maximum Wire Length From Power Supply to Start of Run [ft]						
	12 AWG	14 AWG	16 AWG	18 AWG	20 AWG	22 AWG	24 AWG
5	1088.2	684.4	430.3	270.6	170.2	107.1	67.3
10	544.1	342.2	215.1	135.3	85.1	53.5	33.7
15	362.7	228.1	143.4	90.2	56.7	35.7	22.4
20	272.0	171.1	107.6	67.7	42.6	26.8	16.8
25	217.6	136.9	86.1	54.1	34.0	21.4	13.5
30	181.4	114.1	71.7	45.1	28.4	17.8	11.2
35	155.5	97.8	61.5	38.7	24.3	15.3	9.6
40	136.0	85.5	53.8	33.8	21.3	13.4	8.4
45	120.9	76.0	47.8	30.1	18.9	11.9	7.5
50	108.8	68.4	43.0	27.1	17.0	10.7	6.7
55	98.9	62.2	39.1	24.6	15.5	9.7	6.1
60	90.7	57.0	35.9	22.6	14.2	8.9	5.6
65	83.7	52.6	33.1	20.8	13.1	8.2	5.2
70	77.7	48.9	30.7	19.3	12.2	7.6	4.8
75	72.5	45.6	28.7	18.0	11.3	7.1	4.5
80	68.0	42.8	26.9	16.9	10.6	6.7	4.2
85	64.0	40.3	25.3	15.9	10.0	6.3	4.0
90	60.5	38.0	23.9	15.0	9.5	5.9	3.7
96	56.7	35.6	22.4	14.1	8.9	5.6	3.5