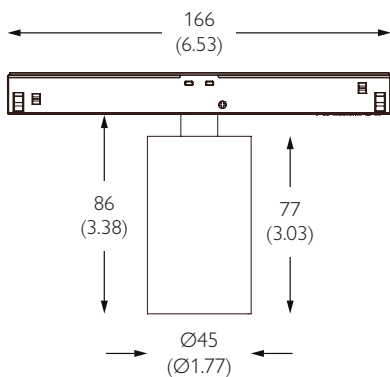


SOLO 11 DYNAMIC WHITE STUCCHI

20° MEDIUM BEAM



LIGHT ENGINE		OUTPUT SCALING	
1800-3000K	2700-5000K	Scaling Value	Delivered lm
1800K		0.55	292lm
2100K		0.75	398lm
2400K		0.94	498lm
2700K	2700K	1.00	530lm
3000K	3000K	1.00	530lm
	3500K	1.02	541lm
	4000K	1.02	546lm
	4500K	1.02	541lm
	5000K	0.99	525lm

TECHNICAL DESCRIPTION

Solo 11 Dynamic White Stucchi is a Constant Voltage LED spotlight with the option of 2 CCT tuning ranges (1800-3000K / 2700-5000K) and comes as standard in white, black and brushed aluminium along with three premium brass finishes. It has three site-changeable optics for flexible beam distribution and 360° lockable pan and 90° constant torque tilt. The medium beam in our 9.60W 550lm module has a peak intensity of 3062cd. An accessory holder is available separately that can accommodate 37mm (1.45") lenses and louvers. This product requires an external 48V Constant Voltage LED power supply.

MECHANICAL & ELECTRICAL

CATEGORY IP20	WATTAGE 9.60W
MATERIAL Machined AL 6063-T6 Machined Brass	FORWARD VOLTAGE 48V
PAN 360°	SUPPLY TYPE Constant Voltage
TILT 90°	DRIVER LOCATION Remote AC to 48VDC
LOCKABLE Pan	DIMMING DALI
WEIGHT 170g 0.37lb	

MOUNTING

MOUNTING 48V Stucchi Track Recessed | Trimless Recessed | Surface | Suspended

FINISHES

FINISHES Brushed Aluminium | Black RAL9005 | Traffic White RAL9016 | Rubbed Bronze* | Polished Brass* | Satin Brass*

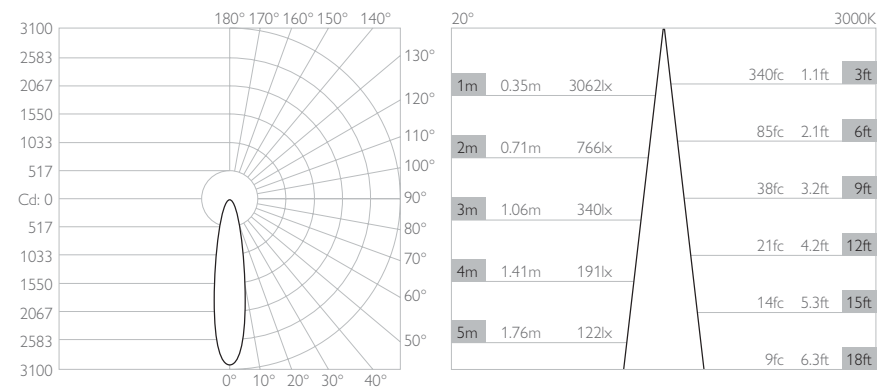
*Premium & custom finishes are built & finished to order. These are subject to an extended lead time & MOQ.

OPTICAL & STANDARDS

NOMINAL LUMENS 550lm	BEAM ANGLE 20°
DELIVERED LUMENS 530lm	CRI 94 TYP
COLOUR TEMPERATURE 1800-3000K 2700-5000K	TM-30 RF: 92 RG: 99
ACCESSORY HOLDER Separate	WARRANTY 5 Years
ACCESSORIES Lenses Louver 37mm (1.45")	LIFETIME L90B10 50,000hrs
TM65 10.77kgCO2e	STANDARDS
TM66 2.4	



All data is for 2700-5000K module at 3000K. Scaling table shows output at different CCT settings.



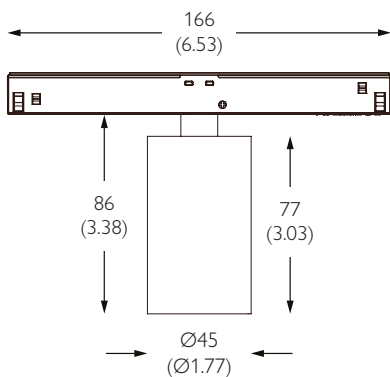
MODEL	TRACK & ADAPTER FINISH	LUMINAIRE FINISH	LED CCT	BEAM ANGLE	DIMMING CONTROL
1042T	T White 9016 B Black 9005	T White 9016 B Black 9005 A Brushed Aluminium R Rubbed Bronze* P Polished Brass* S Brushed Brass*	T01 1800K-3000K 94CRI T02 2700K-5000K 94CRI	ME Medium 20° WD Wide 36° VW Very Wide 50°	D DALI DT6 E DALI DT8

Example Code: 1042T - TT - T01WD - D6

*Premium & custom finishes are built to order, subject to an extended lead time & MOQ

SOLO 11 DYNAMIC WHITE STUCCHI

36° WIDE BEAM



mm (inches)

LIGHT ENGINE		OUTPUT SCALING	
1800-3000K	2700-5000K	Scaling Value	Delivered lm
1800K		0.55	285lm
2100K		0.75	389lm
2400K		0.94	487lm
2700K	2700K	1.00	518lm
3000K	3000K	1.00	518lm
	3500K	1.02	528lm
	4000K	1.02	534lm
	4500K	1.02	528lm
	5000K	0.99	513lm

TECHNICAL DESCRIPTION

Solo 11 Dynamic White Stucchi is a Constant Voltage LED spotlight with the option of 2 CCT tuning ranges (1800-3000K / 2700-5000K) and comes as standard in white, black and brushed aluminium along with three premium brass finishes. It has three site-changeable optics for flexible beam distribution and 360° lockable pan and 90° constant torque tilt. The wide beam in our 9.60W 550lm module has a peak intensity of 1297cd. An accessory holder is available separately that can accommodate 37mm (1.45") lenses and louvers. This product requires an external 48V Constant Voltage LED power supply.

MECHANICAL & ELECTRICAL

CATEGORY IP20	WATTAGE 9.60W
MATERIAL Machined AL 6063-T6 Machined Brass	FORWARD VOLTAGE 48V
PAN 360°	SUPPLY TYPE Constant Voltage
TILT 90°	DRIVER LOCATION Remote AC to 48VDC
LOCKABLE Pan	DIMMING DALI
WEIGHT 170g 0.37lb	

MOUNTING

MOUNTING 48V Stucchi Track Recessed | Trimless Recessed | Surface | Suspended

FINISHES

FINISHES Brushed Aluminium | Black RAL9005 | Traffic White RAL9016 | Rubbed Bronze* | Polished Brass* | Satin Brass*

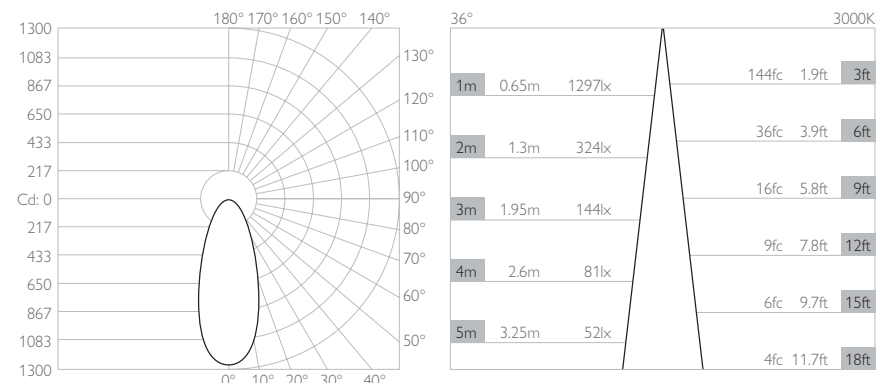
*Premium & custom finishes are built & finished to order. These are subject to an extended lead time & MOQ.

OPTICAL & STANDARDS

NOMINAL LUMENS 550lm	BEAM ANGLE 36°
DELIVERED LUMENS 518lm	CRI 94 TYP
COLOUR TEMPERATURE 1800-3000K 2700-5000K	TM-30 RF: 92 RG: 99
ACCESSORY HOLDER Separate	WARRANTY 5 Years
ACCESSORIES Lenses Louver 37mm (1.45")	LIFETIME L90B10 50,000hrs
TM65 10.77kgCO2e	STANDARDS
TM66 2.4	



All data is for 2700-5000K module at 3000K. Scaling table shows output at different CCT settings.



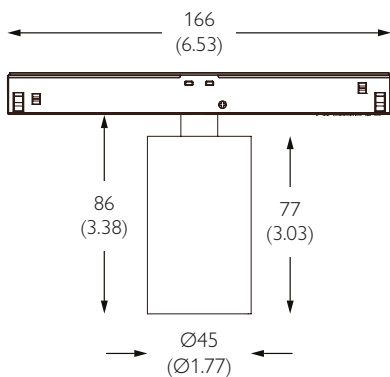
MODEL	TRACK & ADAPTER FINISH	LUMINAIRE FINISH	LED CCT	BEAM ANGLE	DIMMING CONTROL
1042T	T White 9016 B Black 9005	T White 9016 B Black 9005 A Brushed Aluminium R Rubbed Bronze* P Polished Brass* S Brushed Brass*	T01 1800K-3000K 94CRI T02 2700K-5000K 94CRI	ME Medium 20° WD Wide 36° VW Very Wide 50°	D DALI DT6 E DALI DT8

Example Code: 1042T - TT - T01WD - D6

*Premium & custom finishes are built to order, subject to an extended lead time & MOQ

SOLO 11 DYNAMIC WHITE STUCCHI

50° VERY WIDE BEAM



LIGHT ENGINE		OUTPUT SCALING	
1800-3000K	2700-5000K	Scaling Value	Delivered lm
1800K		0.55	229lm
2100K		0.75	313lm
2400K		0.94	392lm
2700K	2700K	1.00	417lm
3000K	3000K	1.00	417lm
	3500K	1.02	425lm
	4000K	1.02	430lm
	4500K	1.02	425lm
	5000K	0.99	413lm

TECHNICAL DESCRIPTION

Solo 11 Dynamic White Stucchi is a Constant Voltage LED spotlight with the option of 2 CCT tuning ranges (1800-3000K / 2700-5000K) and comes as standard in white, black and brushed aluminium along with three premium brass finishes. It has three site-changeable optics for flexible beam distribution and 360° lockable pan and 90° constant torque tilt. The very wide beam in our 9.60W 550lm module has a peak intensity of 623cd. An accessory holder is available separately that can accommodate 37mm (1.45") lenses and louvers. This product requires an external 48V Constant Voltage LED power supply.

MECHANICAL & ELECTRICAL

CATEGORY IP20	WATTAGE 9.60W
MATERIAL Machined AL 6063-T6 Machined Brass	FORWARD VOLTAGE 48V
PAN 360°	SUPPLY TYPE Constant Voltage
TILT 90°	DRIVER LOCATION Remote AC to 48VDC
LOCKABLE Pan	DIMMING DALI
WEIGHT 170g 0.37lb	

MOUNTING

MOUNTING 48V Stucchi Track Recessed | Trimless Recessed | Surface | Suspended

FINISHES

FINISHES Brushed Aluminium | Black RAL9005 | Traffic White RAL9016 | Rubbed Bronze* | Polished Brass* | Satin Brass*

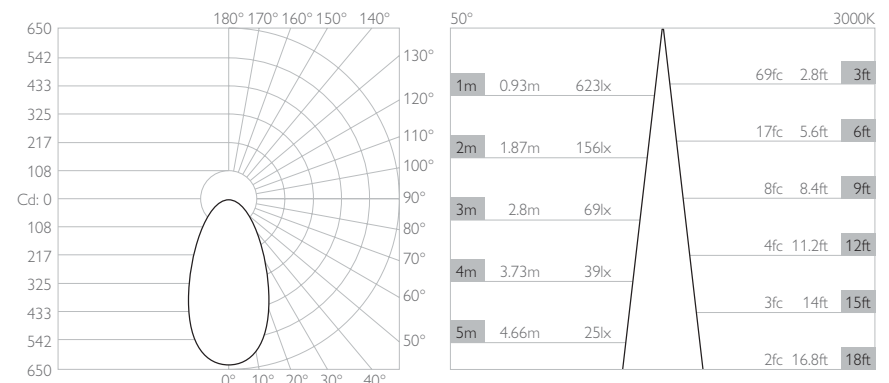
*Premium & custom finishes are built & finished to order. These are subject to an extended lead time & MOQ.

OPTICAL & STANDARDS

NOMINAL LUMENS 550lm	BEAM ANGLE 50°
DELIVERED LUMENS 417lm	CRI 94 TYP
COLOUR TEMPERATURE 1800-3000K 2700-5000K	TM-30 RF: 92 RG: 99
ACCESSORY HOLDER Separate	WARRANTY 5 Years
ACCESSORIES Lenses Louver 37mm (1.45")	LIFETIME L90B10 50,000hrs
TM65 10.77kgCO2e	STANDARDS
TM66 2.4	



All data is for 2700-5000K module at 3000K. Scaling table shows output at different CCT settings.



MODEL	TRACK & ADAPTER FINISH	LUMINAIRE FINISH	LED CCT	BEAM ANGLE	DIMMING CONTROL
1042T	T White 9016 B Black 9005	T White 9016 B Black 9005 A Brushed Aluminium R Rubbed Bronze* P Polished Brass* S Brushed Brass*	T01 1800K-3000K 94CRI T02 2700K-5000K 94CRI	ME Medium 20° WD Wide 36° VW Very Wide 50°	D DALI DT6 E DALI DT8

Example Code: 1042T - TT - T01WD - D6

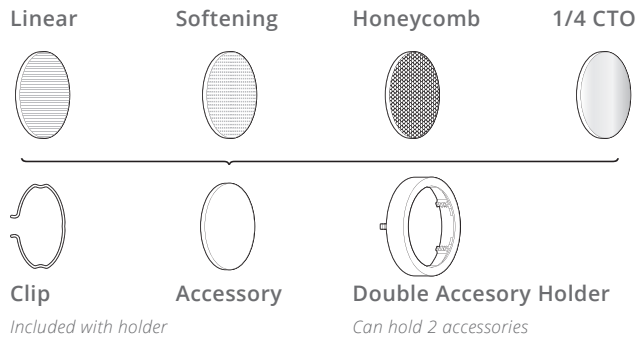
*Premium & custom finishes are built to order, subject to an extended lead time & MOQ

SOLO 11 SERIES SPOTLIGHT ACCESSORIES

FOR USE WITH SOLO 11 INTENSE | PLUS | DYNAMIC WHITE

ACCESSORIES

The Solo 11 series track and surface spotlights can accommodate accessories with a snap in accessory holder.



Double Accessory Holder

Can hold 2 accessories

HEIGHT 13mm (0.512")
DAIMETER 43mm (1.693")

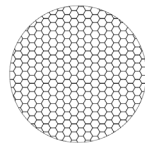


PART CODE 244-BK

Honeycomb Louvre

Enhances glare control

THICKNESS 3.2mm (0.126")
DAIMETER 37mm (1.260")



PART CODE 995-37-BK

1/4 CTO Dichroic

CCT warming - approx 300K

THICKNESS 1.8mm (0.071")
DAIMETER 37mm (1.260")

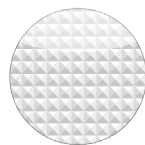


PART CODE 997-1/4CTO-37

Softening Lens

Heavy Diffusion of beam

THICKNESS 3.2mm (0.126")
DAIMETER 37mm (1.260")



PART CODE 991-37

Linear Lens

Elongates beam

THICKNESS 3.9mm (0.154")
DAIMETER 37mm (1.260")



PART CODE 992-37