

HONGPU GONIOPHOTOMETERS SYSTEM TEST REPORT

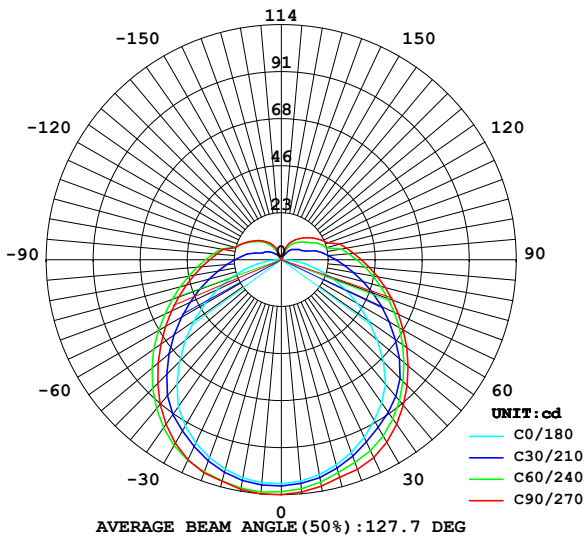
LUMINAIRE PHOTOMETRIC TEST REPORT

Report number:

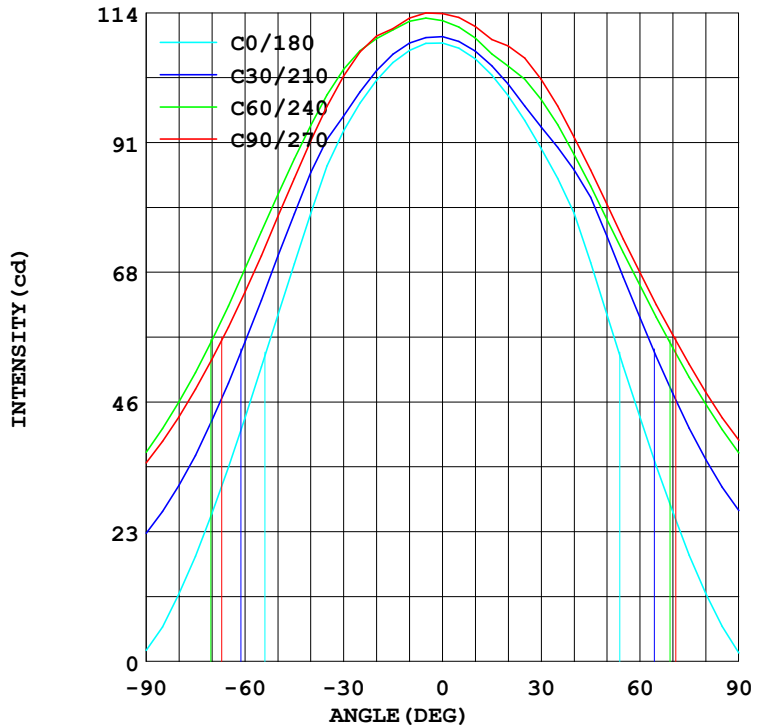
MANUFACTURER:		Address:	
NAME: PX48-SR-30K-SO-F		TYPE:Plexineon 3000K	WEIGHT:N/A
SPECIFICATION:17-LL36-30K		DIMENSION: .12X4X.033	SERIAL No.:N/A

DATA OF LAMP		Imax (cd)	113.9	S/MH (C0/180)	1.27
MODEL		EFFICIENCY (%)	100.0	S/MH (C90/270)	1.34
NOMINAL POWER (W)	12	TOTAL FLUX(lm)	479.25	Voltage (V)	24.04
RATED VOLTAGE (V)	24	EFFICIENCY (lm/W)	38.9	Current (A)	0.512
NOMINAL FLUX (lm)	479.3	η up (%)	16.7	Power (W)	12.33
LAMPS QUANTITY	1	η down (%)	83.3	Power Factor (PF)	1.000
TEST VOLTAGE (V)	24.0	Effective Flux(lm)	465.2	E EI	0.295

LUMINOUS INTENSITY DISTRIBUTION



LUMINOUS INTENSITY DISTRIBUTION



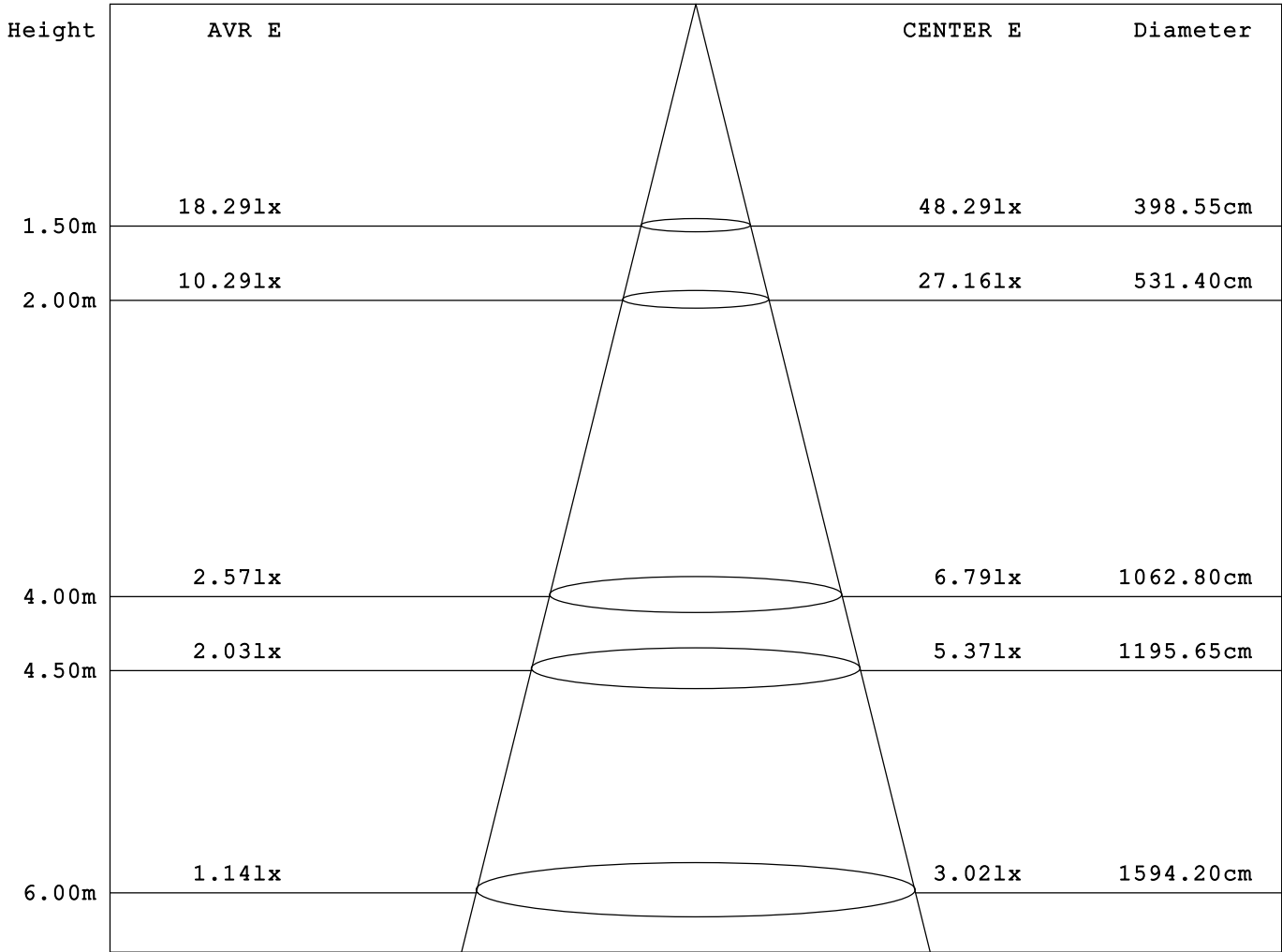
Test System:HOPOO
 Temperature:25.3DEG
 Operators:
 Test Date:02-15-2023

Test Set: 5.0deg/s C-Gamma (TYPE C)
 Humidity:65.0%
 Test Distance:8.367 m
 Remarks: PX48-SR-30K-SO-F

AVERAGE AND CENTER E Figure

Report number:

MANUFACTURER:		Address:	
NAME: PX48-SR-30K-SO-F	TYPE:Plexineon 3000K	WEIGHT:N/A	
SPECIFICATION:17-LL36-30K	DIMENSION: .12X4X.033	SERIAL No.:N/A	



Angle:106.1deg

Test System:HOPOO
 Temperature:25.3DEG
 Operators:
 Test Date:02-15-2023

Test Set: 5.0deg/s C-Gamma (TYPE C)
 Humidity:65.0%
 Test Distance:8.367 m
 Remarks: PX48-SR-30K-SO-F

HONGPU GONIOPHOTOMETERS SYSTEM TEST REPORT

ZONAL FLUX DIAGRAM

Report number:

MANUFACTURER:	Address:	
NAME: PX48-SR-30K-SO-F	TYPE:Plexineon 3000K	WEIGHT:N/A
SPECIFICATION:17-LL36-30K	DIMENSION: .12X4X.033	SERIAL No.:N/A

γ	C0	C45	C90	C135	C180	C225	C270	C315	γ	Φ zone	Φ total
10.0	107.3	110.5	113.0	109.5	105.9	108.4	111.5	107.8	0- 10	10.50	10.50
20.0	102.1	106.6	109.9	105.8	99.40	103.0	108.1	103.0	10- 20	30.28	40.79
30.0	93.24	99.93	102.8	99.58	90.16	96.36	102.2	96.85	20- 30	46.89	87.68
40.0	78.68	90.02	91.42	89.74	78.82	87.75	92.12	88.52	30- 40	58.35	146.0
50.0	60.76	76.55	78.12	76.51	60.90	76.16	80.29	76.69	40- 50	62.76	208.8
60.0	42.63	62.44	64.82	62.27	42.91	63.25	68.32	63.60	50- 60	60.20	269.0
70.0	25.97	49.31	53.06	49.28	26.25	51.06	57.33	50.89	60- 70	53.00	322.0
80.0	11.83	38.22	42.91	38.32	11.90	40.28	47.25	39.86	70- 80	43.51	365.5
90.0	1.960	29.64	34.86	29.75	1.470	31.57	38.85	31.04	80- 90	33.82	399.3
100.0	1.470	23.48	28.84	23.52	0.560	25.09	32.20	24.53	90-100	26.13	425.4
110.0	0.980	15.78	21.35	15.82	0.350	16.90	24.08	16.97	100-110	18.74	444.2
120.0	0.840	12.42	17.78	12.32	0.350	13.33	20.30	13.44	110-120	13.23	457.4
130.0	0.840	9.590	14.56	10.04	0.420	10.60	16.80	10.46	120-130	9.594	467.0
140.0	0.840	6.860	11.48	6.930	0.490	8.260	13.51	7.945	130-140	6.498	473.5
150.0	0.770	3.220	8.400	4.550	0.630	5.390	10.36	4.795	140-150	3.742	477.2
160.0	0.770	1.575	2.240	1.190	0.700	1.540	6.370	1.890	150-160	1.523	478.8
170.0	0.770	0.805	0.630	0.875	0.770	0.805	1.820	0.840	160-170	0.360	479.1
180.0	0.770	0.805	0.630	0.840	0.910	0.770	1.050	0.770	170-180	0.081	479.2
DEG	LUMINOUS INTENSITY:cd									UNIT:lm	

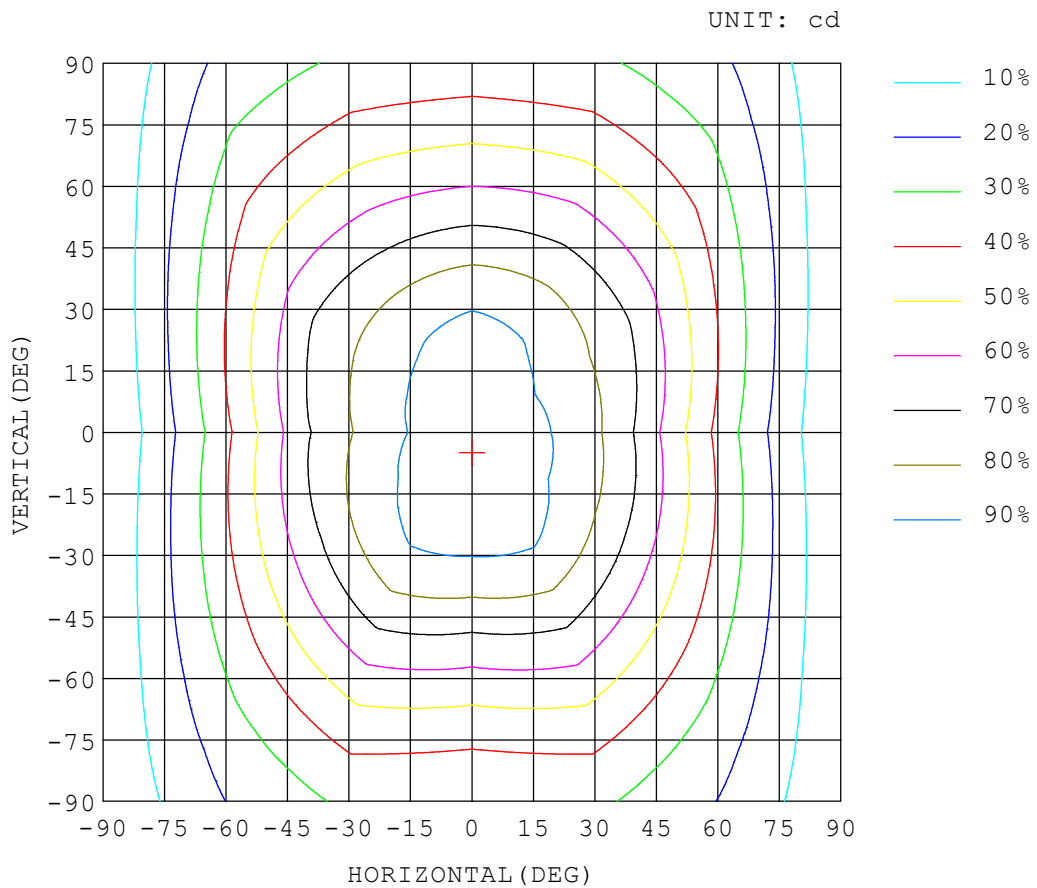
Test System:HOPOO
 Temperature:25.3DEG
 Operators:
 Test Date:02-15-2023

Test Set: 5.0deg/s C-Gamma (TYPE C)
 Humidity:65.0%
 Test Distance:8.367 m
 Remarks: PX48-SR-30K-SO-F

ISOCANDELA DIAGRAM

Report number:

MANUFACTURER:	Address:	
NAME: PX48-SR-30K-SO-F	TYPE:Plexineon 3000K	WEIGHT:N/A
SPECIFICATION:17-LL36-30K	DIMENSION: .12X4X.033	SERIAL No.:N/A



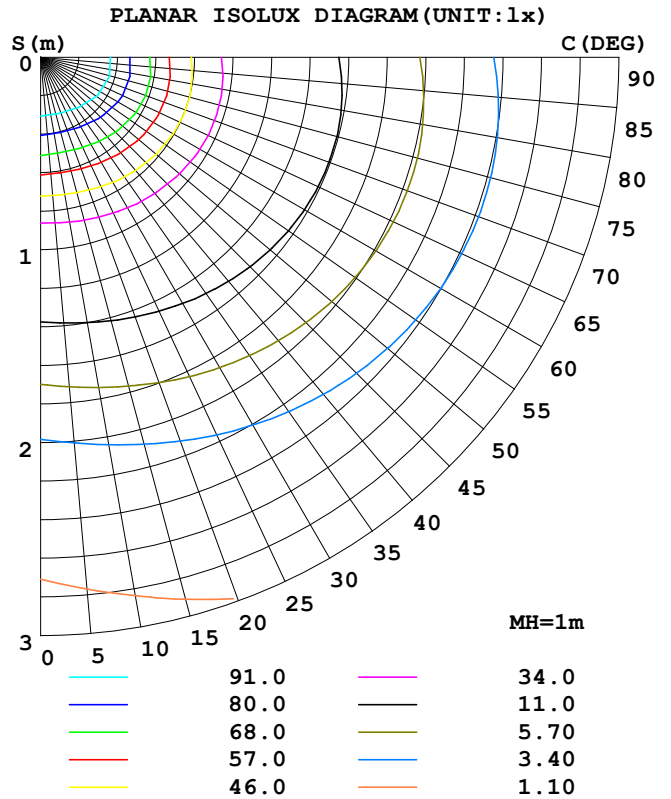
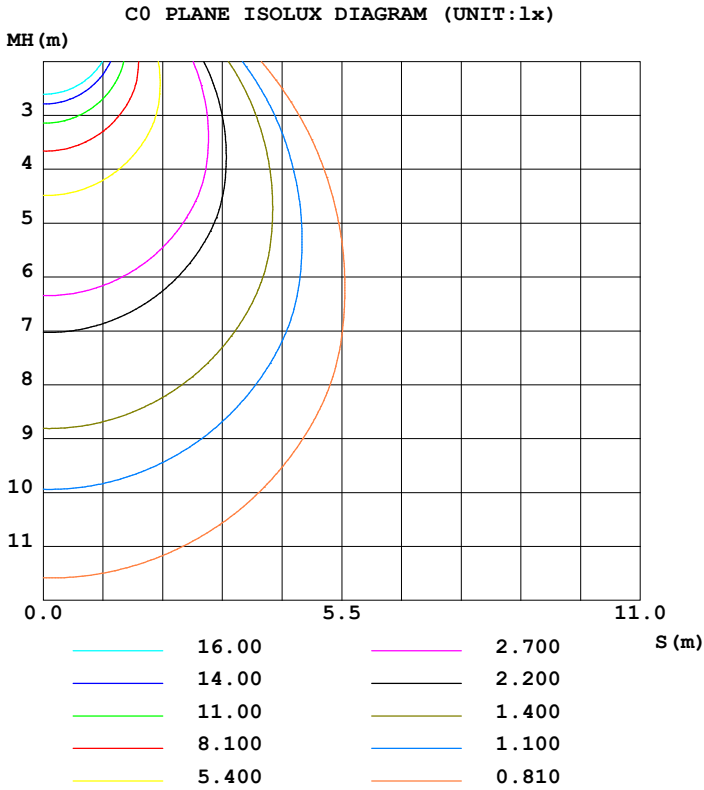
Test System:HOPOO
 Temperature:25.3DEG
 Operators:
 Test Date:02-15-2023

Test Set: 5.0deg/s C-Gamma (TYPE C)
 Humidity:65.0%
 Test Distance:8.367 m
 Remarks: PX48-SR-30K-SO-F

ISOLUX DIAGRAM

Report number:

MANUFACTURER:	Address:	
NAME: PX48-SR-30K-SO-F	TYPE:Plexineon 3000K	WEIGHT:N/A
SPECIFICATION:17-LL36-30K	DIMENSION: .12X4X.033	SERIAL No.:N/A



Test System:HOPOO
 Temperature:25.3DEG
 Operators:
 Test Date:02-15-2023

Test Set: 5.0deg/s C-Gamma (TYPE C)
 Humidity:65.0%
 Test Distance:8.367 m
 Remarks: PX48-SR-30K-SO-F

HONGPU GONIOPHOTOMETERS SYSTEM TEST REPORT

LUMINOUS DISTRIBUTION INTENSITY DATA

Report number:

MANUFACTURER:		Address:	
NAME: PX48-SR-30K-SO-F		TYPE:Plexineon 3000K	WEIGHT:N/A
SPECIFICATION:17-LL36-30K		DIMENSION: .12X4X.033	SERIAL No.:N/A

UNIT: cd

γ (DEG)	C (DEG)											
	0	30	60	90	120	150	180	210	240	270	300	330
0.0	109	110	113	114	112	109	109	110	113	114	112	109
5.0	109	110	113	114	112	109	108	109	111	113	111	108
10.0	107	109	113	113	111	108	106	107	110	112	109	107
15.0	105	107	111	111	110	106	103	105	107	109	107	104
20.0	102	104	109	110	109	103	99.4	101	105	108	105	101
25.0	98.0	100	107	107	107	99.6	95.0	97.5	102	106	103	97.5
30.0	93.2	95.8	104	103	104	95.5	90.1	93.9	98.7	102	99.8	93.8
35.0	87.0	91.7	99.5	97.5	99.3	91.2	84.8	90.3	94.2	97.5	95.7	90.2
40.0	78.6	85.8	94.1	91.4	94.2	85.1	78.8	86.3	89.1	92.1	90.7	86.2
45.0	69.8	78.6	88.2	84.8	88.6	78.1	70.0	81.5	83.5	86.3	85.3	80.8
50.0	60.7	71.1	81.9	78.1	82.3	70.7	60.9	74.6	77.6	80.2	79.5	73.8
55.0	51.7	63.4	75.5	71.2	75.5	63.0	51.8	67.4	71.8	74.2	73.6	66.6
60.0	42.6	56.0	68.8	64.8	68.7	55.7	42.9	60.4	66.0	68.3	67.6	59.5
65.0	34.0	48.8	62.4	58.7	62.3	48.7	34.3	53.5	60.4	62.6	61.4	52.6
70.0	25.9	42.2	56.3	53.0	56.2	42.3	26.2	47.0	55.0	57.3	55.7	46.0
75.0	18.4	36.1	50.7	47.8	50.6	36.4	18.6	40.9	49.9	52.2	50.2	40.0
80.0	11.8	30.8	45.5	42.9	45.5	31.0	11.9	35.4	45.1	47.2	45.2	34.4
85.0	6.02	26.3	40.8	38.6	40.7	26.6	6.16	30.5	40.7	42.8	40.7	29.6
90.0	1.96	22.5	36.7	34.8	36.6	22.8	1.47	26.5	36.6	38.8	36.5	25.5
95.0	1.61	19.5	33.1	31.6	32.9	19.8	0.63	23.1	32.9	35.3	32.9	22.1
100.0	1.47	16.9	30.0	28.8	29.7	17.2	0.56	20.3	29.8	32.2	29.6	19.4
105.0	1.26	13.0	23.8	22.9	23.5	13.3	0.56	17.2	22.4	29.4	23.0	17.0
110.0	0.98	9.87	21.7	21.3	21.2	10.4	0.35	12.6	21.1	24.0	21.2	12.6
115.0	0.91	8.89	19.3	19.5	18.5	9.38	0.28	10.9	19.1	22.1	19.2	11.0
120.0	0.84	7.77	17.0	17.7	16.5	8.12	0.35	10.0	16.6	20.3	16.8	10.0
125.0	0.84	6.72	15.4	16.1	15.0	7.21	0.42	8.82	14.9	18.4	14.9	8.89
130.0	0.84	5.39	13.7	14.5	13.5	6.51	0.42	7.91	13.3	16.8	13.3	7.56
135.0	0.77	3.85	12.2	13.0	12.1	5.60	0.49	7.07	12.1	15.1	11.9	6.23
140.0	0.84	3.29	10.4	11.4	10.7	3.08	0.49	5.74	10.7	13.5	10.5	5.39
145.0	0.84	1.96	8.19	9.94	9.52	1.89	0.56	3.78	9.52	11.7	8.75	4.13
150.0	0.77	0.42	6.02	8.40	7.84	1.26	0.63	2.66	8.12	10.3	6.86	2.73
155.0	0.77	0.77	3.08	6.16	3.71	0.49	0.63	1.33	5.95	8.61	4.97	1.68
160.0	0.77	0.49	2.66	2.24	1.82	0.56	0.70	1.05	2.03	6.37	2.45	1.33
165.0	0.84	0.42	1.54	1.26	1.19	0.56	0.77	1.05	0.70	2.80	0.84	0.98
170.0	0.77	0.49	1.12	0.63	1.19	0.56	0.77	0.98	0.63	1.82	0.70	0.98
175.0	0.84	0.49	1.12	0.63	1.12	0.63	0.84	0.91	0.49	1.26	0.63	0.91
180.0	0.77	0.56	1.05	0.63	1.05	0.63	0.91	0.91	0.63	1.05	0.70	0.84

Test System:HOPOO
 Temperature:25.3DEG
 Operators:
 Test Date:02-15-2023

Test Set: 5.0deg/s C-Gamma (TYPE C)
 Humidity:65.0%
 Test Distance:8.367 m
 Remarks: PX48-SR-30K-SO-F