

# LETO 44 S SML

SURFACE MOUNT LED DOWNLIGHT



**Leto 44 S SML - Surface LED Light.** As a perfect cube, Leto 44 S SML can be used as both a standalone figure as well as in an array with other Leto 44 S SML fixtures. Leto 44 S SML will **NOT** fit over a standard junction box. Requires client supplied reducer ring (TNB 54 C 3) for installation.

## Ordering Code

Fixture	<b>703</b>							
	1	2	3	4	5	6	7	8
Driver				--	--			
	1	2	3	4	5			

## Product Specifications

**SAMPLE:** Fixture 703 - A90 - 615 - 27 - 07 - HO - 08 - 01 | Driver 910 - STD - 120 - A90 - 07

1 - Model	2 - LED	3 - Optic		4 - CCT	5 - Lumen	6 - Accessory
<b>703</b> · Leto 44 Small Surface Mount	<b>A90</b> · 93+ CRI Accuracy	<i>Faceted</i> <b>615</b> · 15° <b>630</b> · 30° <b>645</b> · 45° <b>660</b> · 60°	<i>Smooth</i> <b>630S</b> · 30° <b>645S</b> · 45°	<b>25</b> · 2500K <b>27</b> · 2700K <b>30</b> · 3000K <b>35</b> · 3500K <b>40</b> · 4000K <b>65</b> · 6500K	<b>07</b> · 700 (6.1W) <b>10</b> · 1000 (9.1W)	<b>00</b> · No Accessory <b>DL</b> · Diffusing Lens <b>HO</b> · Honeycomb <b>SL</b> · Solite Lens

7 - Body Color		8 - Baffle Color		1 - Housing	2 - Driver	Dim Level	Dim Level
<i>Standard</i> <b>01</b> · White <b>02</b> · Black <b>08</b> · Silver	<i>Premium</i> <b>52</b> · Mocha <b>53</b> · Charcoal <b>54</b> · Cerulean <b>55</b> · Firebrick <b>XX</b> · RAL	<i>Standard</i> <b>01</b> · White <b>02</b> · Black <b>08</b> · Silver	<i>Premium</i> <b>52</b> · Mocha <b>53</b> · Charcoal <b>54</b> · Cerulean <b>55</b> · Firebrick <b>XX</b> · RAL	<b>00</b> · Integral Driver <b>910</b> · Remote Driver Housing	<b>STD</b> · Non Dimming <b>LCS</b> · 0 - 10 Volt Protocol <b>DIM</b> · Phase <sup>*1/2</sup> <b>ELDOLC</b> · EldoLED 0 - 10 Volt <sup>*2</sup> <b>DALI</b> · Dali Protocol <sup>*2</sup>	N/A 1% 1% 0.1% 0.1%	<b>LUTES</b> · Hilume Ecodigital <sup>*2</sup> 1% <b>LUT2W</b> · 2 Wire for phase <sup>*1/2</sup> 1% <b>DMX</b> · SENSO <sup>*2</sup> <b>EMG</b> · Emergency Driver <sup>*2/3</sup> <b>CSMB</b> · Casambi Wireless Control <sup>*2/3</sup>

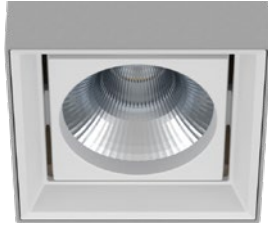
3 - Voltage	4 - LED	5 - Lumen	
<b>120</b> · 120V <b>277</b> · 277V <b>347</b> · 347V <sup>*2/4</sup>	Same as Fixture	Same as Fixture	*1 120V only *2 remote mount *3 second driver required *4 not available with ELDO, Lutron or DMX

# LETO 44 S SML

SURFACE MOUNT LED DOWNLIGHT

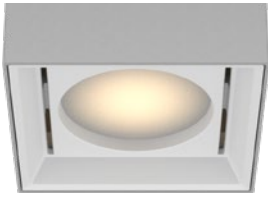
## Reflector

SENso metal spun faceted reflectors are specifically designed to retain as much light as possible. This results in a more power efficient fixture with a higher delivered lumen.

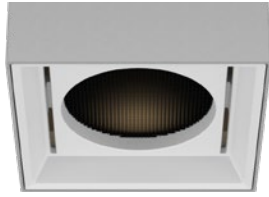


## Accessories

**Diffusing Lens**



**Honeycomb Mesh**



**Solite Lens**



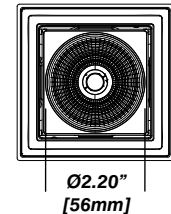
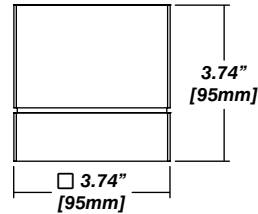
## Installation

- Mounting plate included
- Easy, single motion installation method
- Requires client supplied reducer ring (TNB 54 C 3)

## Construction / Finish

- High quality, scratch resistant powder coated finish in standard, premium or custom colors
- Aluminum extruded Body
- Made in Canada

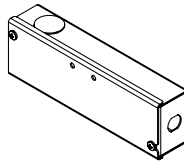
## Dimensions



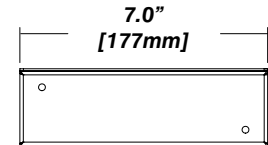
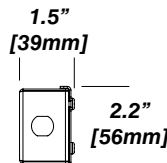
## Senso Driver Housings

### Single Remote Driver Housing

- Fits Standard, LCS or DIM drivers
- Galvanized steel enclosure
- For remote driver applications

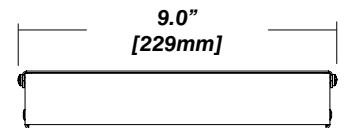
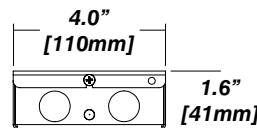
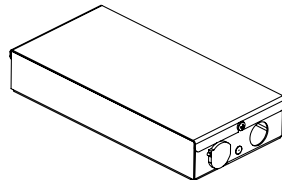


## Dimensions



### Double Remote Driver Housing

- Fits all drivers
- Galvanized steel enclosure
- For remote driver applications



# LETO 44 S SML

SURFACE MOUNT LED DOWNLIGHT

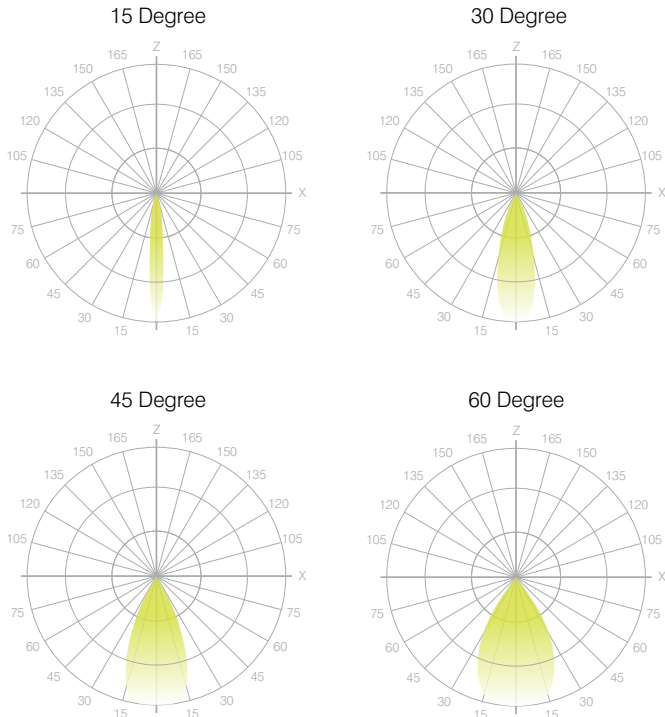


## Photometrics

SENSO's in-house photometric testing ensures that our lighting design can match your needs precisely. Our Goniophotometer and testing lab produces on-demand photometry files based on any specified fixture, including LM-79 Test reports, IES Files, and CRI/CCT measurements. See [SENSOlighting.com](http://SENSOlighting.com) for more information.

*\*Full photometric Reports and IES files available for every configuration*

## Leto 44 Light Distribution



## Color Metrics

### TM 30-15

Our clients deserve the best information possible about their lighting choices. That's why SENSO has invested in the Illuminating Engineering Society (IES) TM 30-15, a new system that measures an LED light source's color rendering properties. Using SENSO's state-of-the-art goniophotometer, this method identifies the optimal light source for your project and helps evaluate the trade-offs between efficacy and color rendering. SENSO can provide TM 30-15 data for all of our products.

*\*Full Color Metric Info Available at [SENSOlighting.com](http://SENSOlighting.com)*

## LED Module Performance

- Output:** Up to 113 lumen/Watt
- Efficacy:** Color consistency within a 3-MacAdam Ellipse
- CCT:** 2500K - 6500K
- Color Rendering:** 93+ CRI
- Min. R Values:** R<sup>9</sup> - 60 R<sup>f</sup> - 90 R<sup>a</sup> - 100

## Driver and Power Consumption

- Dimming:** 1% dimming standard with 0.1% option  
Casambi wireless control available
- Ripple:** Industry leading Low ripple
- Efficiency:** Power Factor >0.9  
Efficiency over 85%  
Class 2 output for safety
- Installation:** Remote mounted

<b>Lumen Option</b>	700lm	1000lm
<b>Fixture Wattage</b>	6.1W	9.1W
<b>Delivered Lumen</b>	691lm	1018lm