

**Features**

The CLA Channel is a linear aluminum extrusion that has been designed to fit many LED lighting needs. Multiple lens options allow for great flexibility and adaptability for any application. Extrusion and diffuser lenses are also field cuttable. Substantial aluminum mass in profile provides excellent heat sink for high power LEDs. Channels come with specified Mounting Clips and End Caps.

**Finish**

Silver anodized, White, Black, Bronze

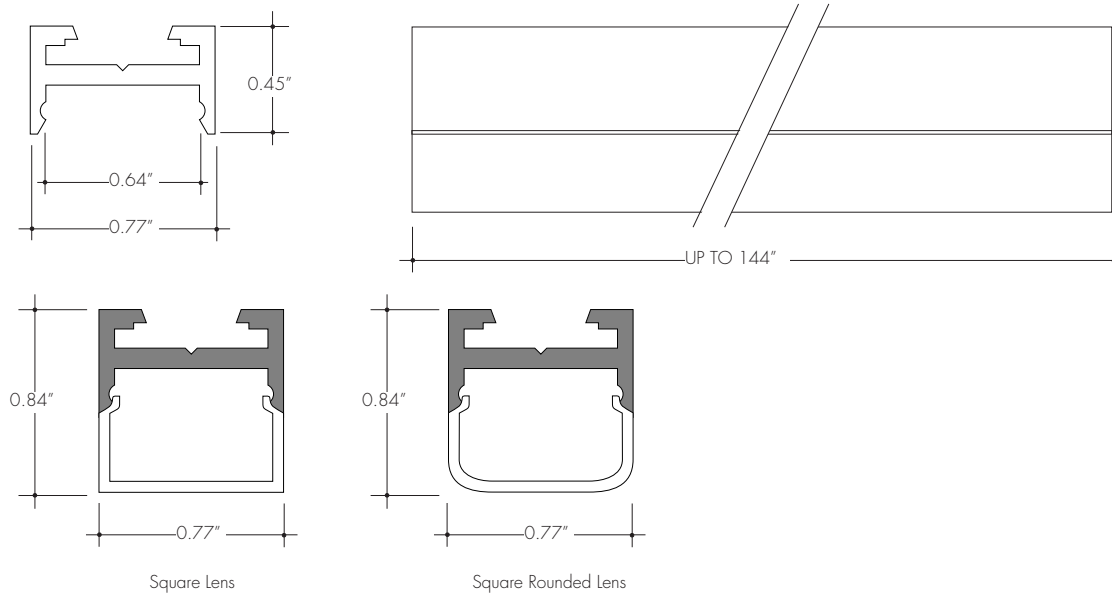
**Diffuser Lens**

Polycarbonate, snap-in-place, UV resistant

**Mounting**

Multiple mounting brackets

**Product Dimensions**



**INCLUDED MOUNTING ACCESSORIES**

EXTRUSION LENGTH	FIXED CLIP	SCREW-IN/MAGNETIC/ADJUSTABLE	END CAP PAIR
48"	48"	3	1
72"	72"	3	1
96"	96"	4	1
144"	144"	5	1

Each pair of endcaps includes 1x H3 (no wire feed hole) and 1x H4 (with hole) where applicable. Additional endcaps and mounting clips are available for purchase.

**Ordering code**

MODEL	LENGTH	LENS	MOUNTING <sup>2</sup>	FINISH <sup>4</sup>
CLAC - CLA Channel <sup>1</sup>	48 - 48" 72 - 72" 96 - 96" <sup>3</sup> 144 - 144" <sup>3</sup>	S - Square Frosted Q - Rounded Square Frosted	FC - Fixed Clip SC - Screw-In MAG - Magnetic A - Adjustable Hinge Mounting	SA - Silver Anodized WH - White BK - Black BZ - Bronze

1 - End Caps are included with channel, one of H3 (no hole) and one of H4 (with hole). Order additional End Caps as necessary.

2 - Mounting Clips are included with channel. Refer to chart above for provided mounting clip quantities. Order additional Mounting Clips as necessary.

3 - For Channels and Lenses over 90", incremental shipping charges will apply.

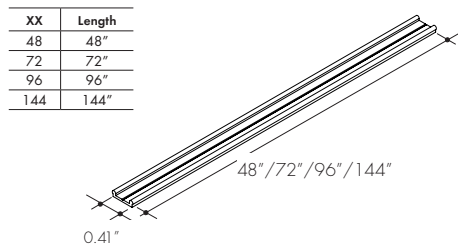
4 - Non SA finishes may have extended lead times. Custom RALs are available, please consult Inside Sales with specific request.

All Channels come with a specified set of Mounting Clips and End Caps, see Ordering Code for details. Order additional Mounting Clips and End Caps as necessary.

**Mounting Clips**

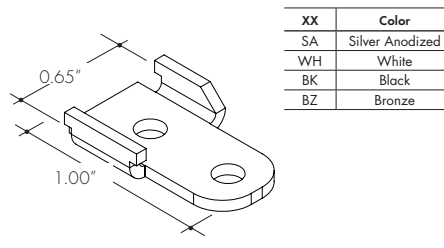
**MC-BOSC-SNAP-XX**

Fixed Clip available in 48", 72", 96", 144"  
-FC



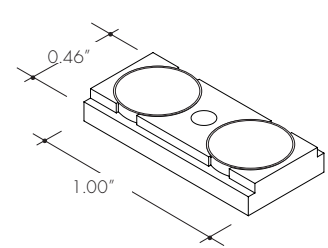
**MB-BOSC-XX**

Fixed Clip available in 48", 72", 96", 144"  
Screw-in mounting bracket  
-SC



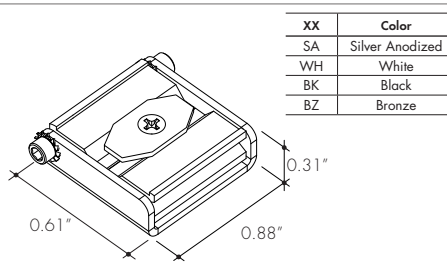
**MB-BOSC-MAG**

Magnetic bracket  
-MAG



**MB-BOSC-A-XX**

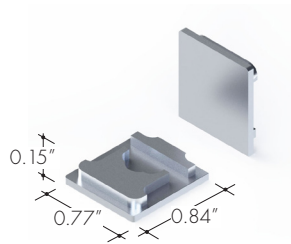
Adjustable Mounting Bracket  
-A



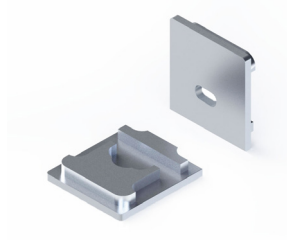
**End Caps**

For Square Frosted Lens

**EC-CLAC-S-H3-XX**  
End Cap



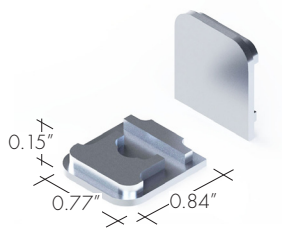
**EC-CLAC-S-H4-XX**  
End Cap with Powerfeed Opening



**End Caps**

For Rounded Square Frosted Lens

**EC-CLAC-Q-H3-XX**  
End Cap



**EC-CLAC-Q-H4-XX**  
End Cap with Powerfeed Opening

