

**Features**

Basics by Luminii Contractor-Grade corner 45° extrusions compatible with Basics by Luminii LED strips.

**Finish**

Silver anodized Channel  
White plastic End Caps

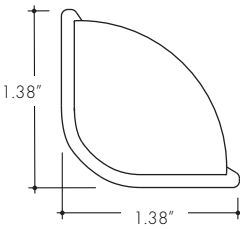
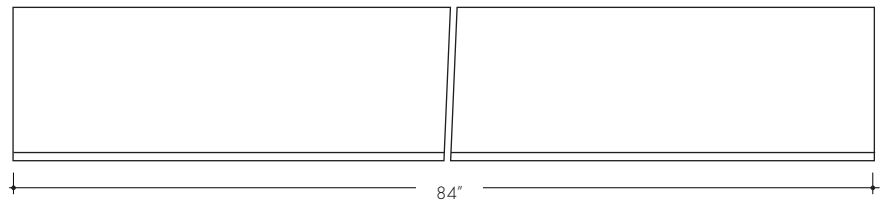
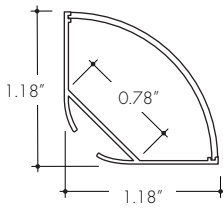
**Mounting**

Fixed Clips, plastic, included

**Diffuser Lens**

Acrylic, snap-in-place, UV resistant

**Product Dimensions**



B45RC with Fixed Clip 45°

**INCLUDED MOUNTING ACCESSORIES**

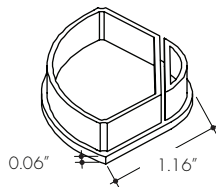
EXTRUSION LENGTH	MOUNTING HARDWARE	END CAP (PAIR)
84"	4	1

Each pair of endcaps includes 1x H0 (no wire feed hole) and 1x H1 (with hole) where applicable. Additional endcaps and mounting clips are available for purchase.

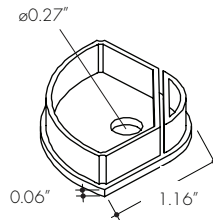
**Accessories**

All Channels come with a specified set of Mounting Clips and End Caps, see Ordering Code for details. Order additional Mounting Clips and End Caps as necessary.

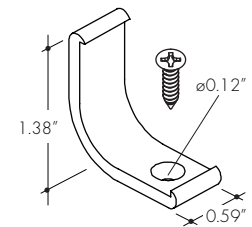
**EC-B45RC-H0-WH**  
Plastic End Cap



**EC-B45RC-H1-WH**  
Plastic End Cap with Powerfeed Opening



**MB-B45RC-WH**  
Fixed Clip 45°  
**-FC45**



**Ordering code**

MODEL	LENGTH	LENS	MOUNTING <sup>2</sup>	FINISH
B45RC - Basics Corner Round Channel <sup>1</sup>	84 - 84"	C - Clear HF - Half Frosted F - Frosted	FC45 - Fixed Clip 45°	SA - Silver Anodized

<sup>1</sup> - End Caps are included with channel, one of H0 (no hole) and one of H1 (with hole). Order additional End Caps as necessary.  
<sup>2</sup> - Mounting Clips are included with channel. Refer to chart above for provided mounting clip quantities. Order additional Mounting Clips as necessary.