

ASTERIA 5

FIXED RECESSED LED DOWNLIGHT



Asteria 5 - Fixed Recessed LED downlight. The most distinctive of the Asteria designs, the Asteria 5 is meant for architectural lighting. Using a tubular lens for glare reduction, this recessed fixture offers horizontal light while maintaining an efficient and soft down light. This new design makes a bold statement.

Ordering Code

Fixture	805					
	1	2	3	4	5	6
Driver		805			--	--
	1	2	3	4	5	6

Product Specifications

SAMPLE: Fixture **805 - A90 - 632 - 27 - 07 - 01** | Driver **910 - 805 - STD - 120 - A90 - 07**

1 - Model	2 - CRI/LED	3 - Tube	4 - CCT	5 - Lumen	6 - Finish	1 - Housing Style
805 · Asteria 5	A90 · 90 CRI Accuracy	632 · 32mm 645 · 45mm	25 · 2500K 27 · 2700K 30 · 3000K 35 · 3500K 40 · 4000K 65 · 6500K	07 · 700 (10.2W) 10 · 1000 (16.1W) 13 · 1300 (22W) 20 · 2000 (31.8W)	01 · White 02 · Black 08 · Silver XX · Custom	910 · Remote 915 · New Construction

2 - Model	3 - Driver	Dim Level	Dim Level	4 - Line Voltage	5 - LED	6 - Lumen
805 · Asteria 5	STD · Non Dimming LCS · 0 - 10 Volt Protocol DIM · Phase ^{*1} ELDOLC · EldoLED 0 - 10 Volt ^{*2} DALI · Dali Protocol ^{*2}	N/A 1% 1% 0.1% 0.1%	LUTES · Hilume Ecodigital ^{*2} LUT2W · 2 Wire for phase ^{*1/2} DMX · SENSO ^{*2} EMG · Emergency Driver ^{*2/4} CSMB · Casambi Wireless Control ^{1/3/4}	1% 1% 	120 · 120V 277 · 277V 347 · 347V ^{*5}	Same as Fixture Same as Fixture

*1 120V only
*2 Requires **910** - Remote
*3 Specified separately
*4 Second driver required
*5 Not available with ELDO, Lutron or DMX

Project : _____
Quantity : _____
Type : _____
Notes : _____



ASTERIA 5

FIXED RECESSED LED DOWNLIGHT



Installation

- For new and retrofit installations
- Holds in place with three friction fit spring clips
- Simple connection between fixture and driver via quick connect

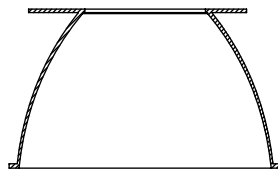
Construction / Finish

- Accented acrylic tube
- Custom finishes are available
- Cast aluminum trim
- Rated for damp location
- Made in Canada

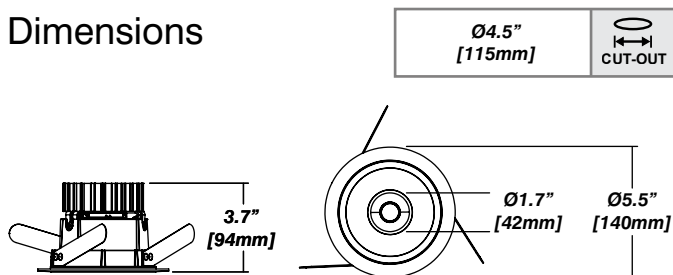
Reflector

Smooth Reflector

Senso metal spun reflectors for function, low glare and efficiency



Dimensions



Photometrics

Senso's in-house photometric testing ensures that our lighting design can match your needs precisely. Our Goniophotometer and testing lab produces on-demand photometry files based on any specified fixture, including LM-79 Test reports, IES Files, and CRI/CCT measurements. See Sensolighting.com for more information.

**Full photometric Reports and IES files available for every configuration*

Color Metrics

TM 30-15

Our clients deserve the best information possible about their lighting choices. That's why Senso has invested in the Illuminating Engineering Society (IES) TM 30-15, a new system that measures an LED light source's color rendering properties. Using Senso's state-of-the-art goniophotometer, this method identifies the optimal light source for your project and helps evaluate the trade-offs between efficacy and color rendering. Senso can provide TM 30-15 data for all of our products.

**Full Color Metric Info Available at Sensolighting.com*

LED Module Performance

Output: Up to 70 lumen/Watt

Efficacy: Color consistency within a 3-MacAdam Ellipse

CCT: 2500K - 6500K

Color Rendering: 93+ CRI

Min. R Values: R⁹ - 60 R^f - 90 R^a - 100

Driver and Power Consumption

Dimming: 1% dimming standard with 0.1% option

Casambi wireless control available

Ripple: Industry leading Low ripple

Efficiency: Power Factor >0.9

Efficiency over 85%

Class 2 output for safety

Installation: Remote mounted

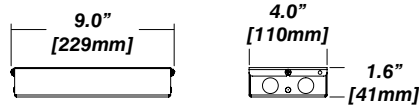
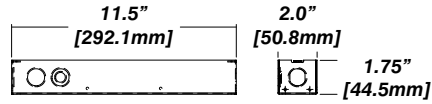
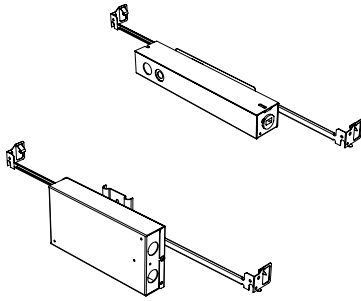
Lumen Option	700lm	1000lm	1300lm	2000lm
Fixture Wattage	10.2W	16.1W	22W	31.8W
Delivered Lumen	719lm	1040lm	1356lm	1942lm

ASTERIA 5

FIXED RECESSED LED DOWNLIGHT

Standard Senso Housing - 910

Dimension



Included

Unless specified otherwise, this is provided as standard

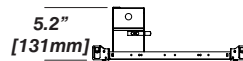
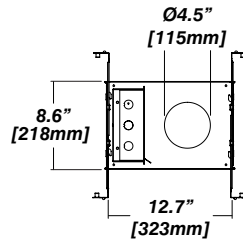
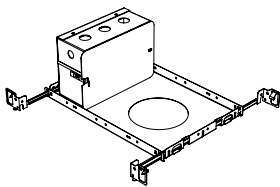
- Bar hanger** • Length: from 14-3/16" to 26"
- Driver with enclosure** • Galvanized steel enclosure
- Security wire** • Flexible aircraft cable, 12" long
- Easy to clip snap body included

* driver can be installed either:

(A) laying on top of ceiling. (B) mounted to the bar hanger and fixed to the ceiling. (C) remote from the fixture, with the bar hanger still used if desired to secure the fixture

New Construction - 915

Dimension



Included

- Plaster Frame** • Galvanized steel construction with precise cut-out
- Bar hanger** • Length: from 14-3/16" to 26"
- Security wire** • Flexible aircraft cable, 12" long
- Easy to clip snap body included