

ASTERIA 1

RECESSED WALL WASHING LED DOWNLIGHT



Asteria 1 - Recessed Wall Washing LED Downlight. The true brilliance of a cutting-edge wall-washing recessed fixture comes from the depth of the aperture design. Balancing the angle and depth of the light source is critical for glare control and light projection. The Asteria 1 achieves this balance, creating amazing light on the area of play.

Ordering Code

Fixture	801						
	1	2	3	4	5	6	7
Driver		801			--	--	
	1	2	3	4	5	6	

Product Specifications

SAMPLE: Fixture **801 - A90 - 618 - 27 - 07 - 00 - 01** | Driver **910 - 801 - STD - 120 - A90 - 07**

1 - Model	2 - CRI/LED	3 - Reflector	4 - CCT	5 - Lumen	6 - Accessory	7 - Finish
801 · Asteria 1	A90 · 93+ CRI Accuracy	618 · Wall Wash	25 · 2500K 27 · 2700K 30 · 3000K 35 · 3500K 40 · 4000K 65 · 6500K	07 · 700 (7.5W) 10 · 1000 (10.2W) 13 · 1300 (13.3W) 20 · 2000 (22.0W) 30 · 3000 (30.5W)	00 · No Accessory FL · Frosted Lens	01 · White 02 · Black 08 · Silver XX · Custom

1 - Housing Style	2 - Model	3 - Driver	Dim Level	Dim Level	4 - Line Voltage
910 · Remote 915 · New Construction	801 · Asteria 1	STD · Non Dimming LCS · 0 - 10 Volt Protocol DIM · Phase ^{*1} ELDOLC · EldoLED 0 - 10 Volt ^{*2} DALI · Dali Protocol ^{*2}	N/A 1% 1% 0.1% 0.1%	LUTES · Hilume Ecodigital ^{*2} LUT2W · 2 Wire for phase ^{*1/2} DMX · SENSO ^{*2} EMG · Emergency Driver ^{*2/4} CSMB · Casambi Wireless Control ^{*3/4}	120 · 120V 277 · 277V 347 · 347V ^{*5}

5 - LED	6 - Lumen
Same as Fixture	Same as Fixture

*1 120V only
 *2 Requires **910** · Remote
 *3 Specified separately
 *4 Second driver required
 *5 Not available with ELDO, Lutron or DMX

Project : _____
 Quantity : _____
 Type : _____
 Notes : _____

ASTERIA 1

RECESSED WALL WASHING LED DOWNLIGHT



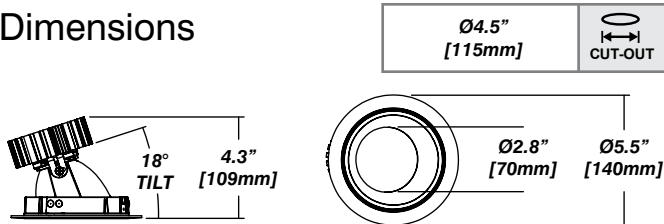
Installation

- For new and retrofit installations
- Holds in place with three friction fit spring clips
- Simple connection between fixture and driver via quick connect
- Fixed tilt angle of 18° with 10° fine tuning adjustment

Construction / Finish

- Custom finishes are available
- Cast aluminum trim
- Rated for damp location
- Made in Canada

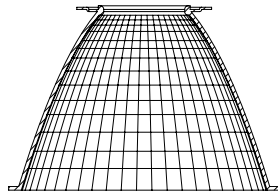
Dimensions



Reflector

Faceted Reflector

Senso metal spun reflectors for function, low glare and efficiency



Photometrics

Senso's in-house photometric testing ensures that our lighting design can match your needs precisely. Our Goniophotometer and testing lab produces on-demand photometry files based on any specified fixture, including LM-79 Test reports, IES Files, and CRI/CCT measurements. See Sensolighting.com for more information.

**Full photometric Reports and IES files available for every configuration*

Color Metrics

TM 30-15

Our clients deserve the best information possible about their lighting choices. That's why Senso has invested in the Illuminating Engineering Society (IES) TM 30-15, a new system that measures an LED light source's color rendering properties. Using Senso's state-of-the-art goniophotometer, this method identifies the optimal light source for your project and helps evaluate the trade-offs between efficacy and color rendering. Senso can provide TM 30-15 data for all of our products.

**Full Color Metric Info Available at Sensolighting.com*

LED Module Performance

Output: Up to 100 lumen/Watt

Efficacy: Color consistency within a 3-MacAdam Ellipse

CCT: 2500K - 6500K

Color Rendering: 93+ CRI

Min. R Values: R⁹ - 60 R^f - 90 R^a - 100

Driver and Power Consumption

Dimming: 1% dimming standard with 0.1% option

Casambi wireless control available

Ripple: Industry leading Low ripple

Efficiency: Power Factor >0.9

Efficiency over 85%

Class 2 output for safety

Installation: Remote mounted

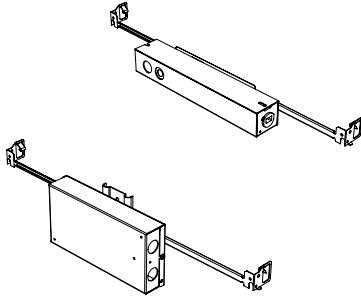
Lumen Option	700lm	1000lm	1300lm	2000lm	3000lm
Fixture Wattage	7.5W	10.2W	13.3W	22W	30.5W
Delivered Lumen	746lm	1024lm	1309lm	2040lm	2953lm

ASTERIA 1

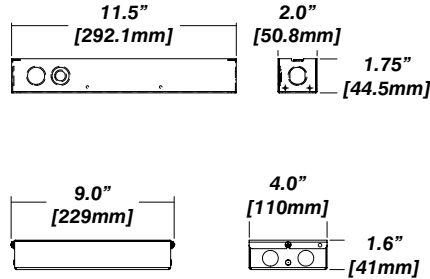
RECESSED WALL WASHING LED DOWNLIGHT

Housing Options

Standard Senso Housing - 910



Dimension



Included

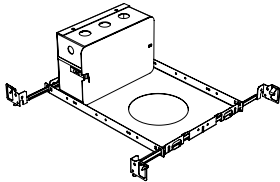
Unless specified otherwise, this is provided as standard

- Bar hanger** • Length: from 14-3/16" to 26"
- Driver with enclosure** • Galvanized steel enclosure
- Security wire** • Flexible aircraft cable, 12" long
- Easy to clip snap body included

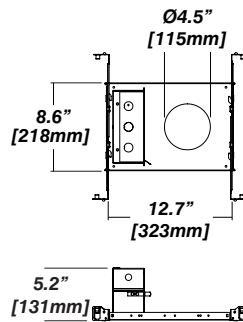
* driver can be installed either:

- (A) laying on top of ceiling. (B) mounted to the bar hanger and fixed to the ceiling. (C) remote from the fixture, with the bar hanger still used if desired to secure the fixture

New Construction - 915



Dimension



Included

- Plaster Frame** • Galvanized steel construction with precise cut-out
- Bar hanger** • Length: from 14-3/16" to 26"
- Security wire** • Flexible aircraft cable, 12" long
- Easy to clip snap body included